

Powerful and efficient 3-phase
AC drive, lift and steer control

Ergonomic and spacious operator
compartment

Compact design for greater
maneuverability

The right drive and lifting
performance package to match
your material handling needs

Outstanding capacity retention and
load stability at high lift heights



ETV 318 / 320 / 325 and ETM 325

Sit-Down Moving Mast Reach Truck (3,900-5,500 lbs.)

The ETV / ETM 3 series moving mast reach trucks offer the right solution for a wide range of applications. What features are most important to your business?

- **Performance** – Can drive up to 8.7 mph¹⁾ (loaded or unloaded) with excellent acceleration characteristics.
- **Energy efficient** – Jungheinrich® 4th generation AC technology allows the truck to run up to two shifts on a single battery charge in most applications.
- **Outstanding residual capacities** – With lift heights over 42 feet, this truck can reach your tallest racks and can typically retain full capacity over 22 feet (depending on the reach truck configuration).

Premium ergonomics come standard with our moving mast reach trucks. This includes:

- Spacious, highly-adjustable operator compartment suitable for a wide range of operators.
- Automotive-style drive pedals allow for intuitive operation.
- The Solo-Pilot and Multi-Pilot control handles are both ergonomic and highly productive.

- Curve Control, which provides automatic speed reduction during cornering, provides the operator with confidence while driving the reach truck, particularly when working in confined areas.

¹⁾ With "Drive Plus" Option. Refer to specification sheet for standard drive speeds.

Technical data

as of: 04/2014

Characteristics	1.1 Brand		Jungheinrich		Jungheinrich			
	1.2 Model		ETV 318		ETV 320			
	1.2a Additional model designation (G = fork, N = narrow, E = integrated sideshifter)							
	1.3 Power type		electric		electric			
	1.4 Operator position		transverse seat		transverse seat			
	1.5 Load capacity at rated load center	lb	kg	3,900	1,800	4,400	2,000	
	1.6 Rated load center	in	mm	24	600	24	600	
	1.8 Load distance, center of load axle to fork face ¹⁾	in	mm	14.3	364	16.2	412	
	1.8a Additional load distance, mast extended forward	in	mm	8.1	205	9.1	230	
	1.9 Wheelbase	in	mm	57.5	1,460	59.8	1,518	
Weights	2.1a Service weight (including battery)		lb	kg	7,765	3,522	8,047	3,650
	2.3 Axle loading, no load, front / rear		lb	kg	4,572 / 3,192	2,074 / 1,448	4,061 / 2,707	1,842 / 1,228
	2.4 Axle loading, fork extended, loaded front / rear		lb	kg	983 / 10,750	446 / 4,876	1,235 / 9,061	560 / 4,110
	2.5 Axle loading, fork retracted, loaded front / rear		lb	kg	3,979 / 7,754	1,805 / 3,517	3,706 / 6,590	1,681 / 2,989
Wheels, Chassis	3.1 Tire type / material		Vulkollan® polyurethane		Vulkollan® polyurethane			
	3.2 Tire size front (load)		ø 343 x 114		ø 343 x 114			
	3.3 Tire size rear (drive)		ø 285 x 100		ø 355 x 106			
	3.5 Wheels, number, drive / load (x=driven)		1x / 2		1x / 2			
	3.7 Track width, drive / load (center of tires)		in	mm	45	1,136	45	1,155
Dimensions	4.1 Mast or fork carriage tilt forward / backward ²⁾		deg °		1° / 5°		1° / 5°	
	4.2 Lowered mast height		in	mm	94.5	2,400	94.5	2,400
	4.3 Fork free lift height (see tables)		in	mm	65.7	1,670	66	1,670
	4.4 Maximum fork height (see tables)		in	mm	208.7	5,300	209	5,300
	4.5a Extended mast height (including 39.5 inches / 1,000 mm LBR)		in	mm	256.7	6,520	257	6,520
	4.7 Overhead guard height (top)		in	mm	86.2	2,190	86.2	2,190
	4.8 Ground to seat index point		in	mm	41.6	1,057	41.6	1,057
	4.10 Height of wheel arms		in	mm	11.2	285	14.0	355
	4.19 Overall length (incl. forks)		in	mm	95.2	2,418	96.8	2,459
	4.20 Length to fork face (includes fork thickness) ¹⁾		in	mm	51.4	1,306	51.8	1,316
	4.21 Overall width - chassis / wheel legs		in	mm	50.0 / 50.0	1,270 / 1,270	50.8 / 50.0	1,290 / 1,270
	4.22 Fork dimensions – length x width x thickness		in	mm	45 X 6 X 2	1,150 X 150 X 50	45.3 x 5.5 x 1.97	1,150 x 140 x 50
	4.23 Fork carriage type (to ISO 2328, class/type A,B)				2B		2B	
	4.24 Fork carriage width		in	mm	32.7	830	32.7	830
	4.25 Overall fork width		in	mm	13.2 / 28.7	335 / 730	14.0 / 29.5	356 / 750
	4.26 Distance between wheel arms		in	mm	37.0	940	37.0	940
	4.32 Ground clearance at center of wheelbase		in	mm	3.1	80	3.7	95
4.32a Ground clearance at lowest point		in	mm	1.2	30	1.2	30	
4.34a Aisle width for pallets (Ast) 48 x 40 ¹⁾		in	mm	109.8	2,790	110.0	2,794	
4.35 Minimum outside turning radius		in	mm	65.5	1,663	67.3	1,710	
4.37 Length to tip of wheel arms		in	mm	72.5	1,842	75.6	1,920	
Performance	5.1 Travel speed, loaded / no load ³⁾		mph	km/h	6.8-8.7 / 6.8-8.7	11-14 / 11-14	6.8-8.7 / 6.8-8.7	11-14 / 11-14
	5.2 Lift speed, loaded / no load ⁴⁾		fpm	m/s	63.0-74.8 / 126	0.32-0.38 / 0.64	63.0-74.8 / 126	0.32-0.38 / 0.64
	5.3 Lowering speed, loaded / no load		fpm	m/s	108.3 / 108.3	0.55 / 0.55	108.3 / 108.3	0.55 / 0.55
	5.4 Reaching speed, loaded / no load ⁴⁾		fpm	m/s	39.4 / 39.4	0.2 / 0.2	39.4 / 39.4	0.2 / 0.2
	5.7 Gradeability loaded / no load		%		7	11	7	11
5.8 Maximum gradeability loaded / no load		%		9	13	10	15	
5.9 Acceleration time loaded / no load ³⁾		Sec		5.1-4.6 / 4.8-4.2		5.1-4.6 / 4.8-4.2		
5.10 Brakes - service		type		electric		electric		
Motors	6.1 Drive motor rating S ₂ 60 min.		HP	kW	9.25	6.9	9.25	6.9
	6.2 Lift motor rating at S ₃ 15%		HP	kW	18.8	14	18.8	14
	6.4 Battery voltage / nominal capacity K ₅		V	Ah	48	620	48	620
	6.5 Battery weight, minimum / maximum		lb	kg	1,967 / 2,802	892 / 1,271	1,967 / 3,276	892 / 1,486
	8.1a Electric control system - drive / hydraulic		type		AC / AC		AC / AC	
8.2 Hydraulic pressure for attachments		PSI	bar	2,175	150	2,175	150	
8.3 Hydraulic flow rate for attachments		gpm	lpm	5	20	5	20	
8.4 Sound pressure level at operator's ear according to EN 12053		dB(A)		68		68		

1) Other battery sizes change these values.

2) Values are dependant on mast.

3) Second value is for "Drive Plus" option.

4) Second value is for "Lift Plus" option.

Characteristics	1.1 Brand		Jungheinrich		Jungheinrich			
	1.2 Model		ETM 325		ETV 325			
	1.2a Additional model designation (G = fork, N = narrow, E = integrated sideshifter)							
	1.3 Power type		electric		electric			
	1.4 Operator position		transverse seat		transverse seat			
	1.5 Load capacity at rated load center	lb	kg	5,500	2,500	5,500	2,500	
	1.6 Rated load center	in	mm	24	600	24	600	
	1.8 Load distance, center of load axle to fork face ¹⁾	in	mm	15.3	389	19.2	487	
	1.8a Additional load distance, mast extended forward	in	mm	9.1	230	9.1	230	
	1.9 Wheelbase	in	mm	65.9	1,673	65.9	1,673	
Weights	2.1a Service weight (including battery)		lb	kg	8,587	3,895	8,157	3,700
	2.3 Axle loading, no load, front / rear		lb	kg	5,013 / 3,574	2,274 / 1,621	4,991 / 3,574	2,264 / 1,621
	2.4 Axle loading, fork extended, loaded front / rear		lb	kg	807 / 13,292	366 / 6,029	1,327 / 12,341	602 / 5,598
	2.5 Axle loading, fork retracted, loaded front / rear		lb	kg	4,535 / 9,564	2,057 / 4,338	4,480 / 9,189	2,032 / 4,168
Wheels, Chassis	3.1 Tire type / material		Vulkollan® polyurethane		Vulkollan® polyurethane			
	3.2 Tire size front (load)		ø 343 x 140		ø 343 x 140			
	3.3 Tire size rear (drive)		ø 355 x 135		ø 355 x 135			
	3.5 Wheels, number, drive / load (x=driven)		1x / 2		1x / 2			
	3.7 Track width, drive / load (center of tires)		in	mm	41	1,034	47	1,184
Dimensions	4.1 Mast or fork carriage tilt forward / backward ²⁾		deg °		1° / 5°		1° / 5°	
	4.2 Lowered mast height		in	mm	94.5	2,400	94.5	2,400
	4.3 Fork free lift height (see tables)		in	mm	66	1,670	66	1,670
	4.4 Maximum fork height (see tables)		in	mm	209	5,300	209	5,300
	4.5a Extended mast height (including 39.5 inches / 1,000 mm LBR)		in	mm	257	6,520	257	6,520
	4.7 Overhead guard height (top)		in	mm	86.2	2,190	86.2	2,190
	4.8 Ground to seat index point		in	mm	41.6	1,057	41.6	1,057
	4.10 Height of wheel arms		in	mm	14.0	355	14.0	355
	4.19 Overall length (incl. forks)		in	mm	100.3	2,547	100.3	2,459
	4.20 Length to fork face (includes fork thickness) ¹⁾		in	mm	58.8	1,494	55.0	1,396
	4.21 Overall width - chassis / wheel legs		in	mm	47.2 / 44.1	1,198 / 1,120	53.1 / 50.0	1,348 / 1,270
	4.22 Fork dimensions – length x width x thickness		in	mm	45.3 x 5.5 x 1.97	1,150 x 140 x 50	45.3 x 5.5 x 1.97	1,150 x 140 x 50
	4.23 Fork carriage type (to ISO 2328, class/type A,B)				2B		2B	
	4.24 Fork carriage width		in	mm	32.7	830	32.7	830
	4.25 Overall fork width		in	mm	14.0 / 22.8	356 / 580	14.0 / 29.5	356 / 750
	4.26 Distance between wheel arms		in	mm	31.1	790	37.0	940
	4.32 Ground clearance at center of wheelbase		in	mm	3.7	95	3.7	95
4.32a Ground clearance at lowest point		in	mm	1.2	30	1.2	30	
4.34a Aisle width for pallets (Ast) 48 x 40 ¹⁾		in	mm	116.9	2,969	113.5	2,883	
4.35 Minimum outside turning radius		in	mm	73.4	1,865	73.4	1,865	
4.37 Length to tip of wheel arms		in	mm	81.7	2,075	81.7	2,075	
Performance	5.1 Travel speed, loaded / no load		mph	km/h	8.7 / 8.7	14 / 14	8.7 / 8.7	14 / 14
	5.2 Lift speed, loaded / no load		fpm	m/s	68.9 / 126.0	0.35 / 0.64	68.9 / 126.0	0.35 / 0.64
	5.3 Lowering speed, loaded / no load		fpm	m/s	108.3 / 108.3	0.55 / 0.55	108.3 / 108.3	0.55 / 0.55
	5.4 Reaching speed, loaded / no load		fpm	m/s	39.4 / 39.4	0.2 / 0.2	39.4 / 39.4	0.2 / 0.2
	5.7 Gradeability loaded / no load		%		7	11	7	11
5.8 Maximum gradeability loaded / no load		%		10	15	10	15	
5.9 Acceleration time loaded / no load		Sec		5.4 / 4.8		5.4 / 4.8		
5.10 Brakes - service		type		electric		electric		
Motors	6.1 Drive motor rating S ₂ 60 min.		HP	kW	9.25	6.9	9.25	6.9
	6.2 Lift motor rating at S ₃ 15%		HP	kW	18.8	14	18.8	14
	6.4 Battery voltage / nominal capacity K ₅		V	Ah	48	620	48	620
	6.5 Battery weight, minimum / maximum		lb	kg	2,344 / 3,276	1,063 / 1,486	1,967 / 3,276	2,802 / 1,486
	8.1a Electric control system - drive / hydraulic		type		AC / AC		AC / AC	
8.2 Hydraulic pressure for attachments		PSI	bar	2,175	150	2,175	150	
8.3 Hydraulic flow rate for attachments		gpm	lpm	5	20	5	20	
8.4 Sound pressure level at operator's ear according to EN 12053		dB(A)		68		68		

1) Other battery sizes change these values.

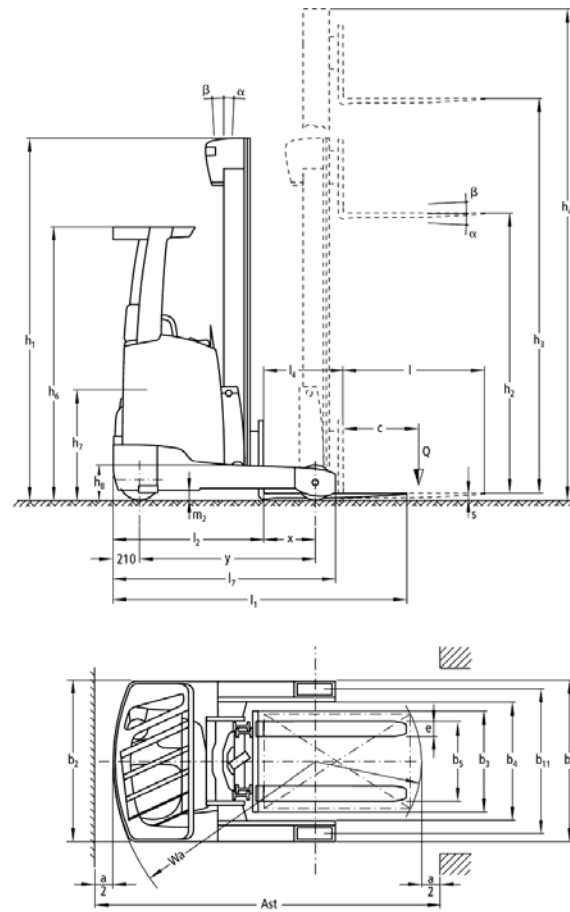
2) Values are dependant on mast.

3) Second value is for "Drive Plus" option.

4) Second value is for "Lift Plus" option.

This specification sheet only provides technical values for the standard truck. Non-standard tires, different masts, additional equipment, etc., could produce other values. Rights reserved for technical changes and improvements.

ETV/ETM 320/325



Mast Table ETV 318 / 320 / 325 and ETM 325

	Lift h ₃		Closed Mast Height h ₁		Free lift h ₂		Extended mast height h ₄ *		Mast tilt forward / backward	Tilt forks forward / backward
	in	mm	in	mm	in	mm	in	mm	α° / β°	α° / β°
Three-stage mast DZ (Full free-lift)	167	4,250	81	2,050	51	1,320	197	4,996	1 / 5	—
	185	4,700	87	2,200	57	1,470	215	5,446	1 / 5	—
	196	5,000	91	2,300	61	1,570	227	5,746	1 / 5	—
	208	5,300	95	2,400	65	1,670	239	6,046	1 / 5	—
	220	5,600	99	2,500	69	1,770	250	6,346	1 / 5	—
	232	5,900	103	2,600	73	1,870	262	6,646	0.5 / 2	—
	244	6,200	107	2,700	77	1,970	274	6,946	0.5 / 2	2 / 5
	255	6,500	111	2,800	81	2,070	286	7,246	0.5 / 2	2 / 5
	267	6,800	115	2,900	85	2,170	298	7,546	0.5 / 2	2 / 5
	291	7,400	123	3,100	93	2,370	321	8,146	0.5 / 1	2 / 5
	314	8,000	130	3,300	101	2,570	345	8,746	0.5 / 1	2 / 5
	331	8,420	136	3,440	106	2,710	361	9,166	0.5 / 1	2 / 5
	343	8,720	140	3,540	110	2,810	373	9,466	0.5 / 1	2 / 5
	358	9,110	145	3,670	115	2,940	389	9,856	0.5 / 1	2 / 5
	378	9,620	152	3,840	122	3,110	409	10,366	—	2 / 5
	391	9,950	156	3,950	126	3,220	422	10,696	—	2 / 5
	402	10,220	162	4,100	132	3,370	432	10,966	—	2 / 5
	414	10,520	166	4,200	136	3,470	444	11,266	—	2 / 5
	421	10,700	168	4,260	138	3,530	451	11,446	—	2 / 5
	428	10,880	171	4,320	141	3,590	458	11,626	—	2 / 5
437	11,120	174	4,400	144	3,670	468	11,866	—	2 / 5	
453	11,510	179	4,530	149	3,800	483	12,256	—	2 / 5	
Only ETV 320 / 325	473	12,020	186	4,700	156	3,970	503	12,766	—	2 / 5
	493	12,530	192	4,870	162	4,140	523	13,276	—	2 / 5
	505	12,830	196	4,970	166	4,240	535	13,576	—	2 / 5
	511	13,000	198	5,026	169	4,296	542	13,746	—	2 / 5

*Includes standard load backrest with height 39.5 inches.

The Jungheinrich Advantage

Jungheinrich's AC technology

- Jungheinrich's 4th generation AC technology provides improved performance and energy efficiency.
- Sealed motors, controllers and connectors provide for better durability especially when working in dusty or damp applications.
- AC Electric Power Steering provides improved serviceability, performance and energy efficiencies.
- AC motors lower maintenance costs by removing wear items commonly found in DC motors, such as contactors, brushes and springs.

Premium ergonomics

- Full suspension fabric seat with fore/aft, backrest and weight adjustments.
- Highly-adjustable operator compartment, which allows operators of various sizes to be comfortable and productive.
- Ergonomic and intuitive operator controls



Highly-ergonomic cab

- All drive and hydraulic functions are comfortably controlled by either the Multi-Pilot or Solo-Pilot control handles.
- Low effort AC electric power steering.
- LCD operator display.
- Provides immediate feedback to both the operator and technician.
- 360° steer direction indicator.
- Battery discharge indicator.
- Three performance modes which can be modified to suit any application.
- Optional readouts such as lift height indicator and load weight display.

Robust and durable mast design

- High residual capacities.
- Good visibility both through and around the mast.
- Patented and proprietary mast reach cushioning allows for an improvement in operational productivities.
- Optional regenerative lowering can provide even more battery life, especially in those high lift applications.



MULTI-PILOT hydraulic control (optional)

Performance-enhancing options to meet your application

(availability depends on specific model)

- "Drive Plus" option increases drive speeds up to 8.7 mph which can be especially beneficial for large warehouse applications.
- "Lift Plus" option increases lift speeds which can be especially beneficial for high lift applications.
- Anti-Slip Regulation (ASR) option for controlled acceleration on smooth or wet surfaces.
- A wide range of lift and lower limit options.

Parts when you need them

Jungheinrich's Parts Fast or Parts Free Guarantee ensures next-business-day delivery by 5:00 PM of all Jungheinrich parts in the United States, or they're free, including freight. For customers in Canada and Mexico, the guarantee ensures shipping of parts within 24 hours from the time the order was placed by the dealer. See your local Jungheinrich dealer for program details.

* Programs may be subject to change without notice and may vary by region. Please ask your local Jungheinrich dealer for complete terms and conditions.

