

Powerful and efficient 3-phase  
AC drive, lift and steer control

Ergonomic and spacious operator  
compartment

Compact design for maximum  
maneuverability

The right performance package for  
your business



## ETV / ETM 214 / 216

### Sit-Down Moving Mast Reach Truck (3,000-3,500 lbs.)

The ETV / ETM 214 / 216 reach trucks offer the right solution for a wide range of applications. What features are most important to your business?

- **Performance** – Can drive up to 8.7 mph<sup>1)</sup> (loaded or unloaded) with excellent acceleration characteristics.
- **Energy efficient** – Jungheinrich® 4<sup>th</sup> generation AC technology allows for up to two shifts on a single battery charge.
- **Outstanding residual capacities** – With lift heights over 35 feet, this truck can reach your tallest racks and can typically retain full capacity over 27 feet (depending on the reach truck configuration).

Premium ergonomics come standard with our moving mast reach trucks. This includes:

- Spacious, highly-adjustable operator compartment suitable for a wide range of operators.
- Automotive-style drive pedals allow for intuitive operation.
- The Solo-Pilot and Multi-Pilot control handles are both ergonomic and highly productive.

- Curve Control, which provides automatic speed reduction during cornering, provides the operator with confidence while driving the reach truck, particularly when working in confined areas.

<sup>1)</sup> With "Drive Plus" Option. Refer to specification sheet for standard drive speeds.

# Technical data

as of: 11/2013

Characteristics	1.1 Manufacturer		Jungheinrich		Jungheinrich		
	1.2 Model		ETM 214		ETV 214		
Weights	G = fork, E = integrated sideshift		GE		GE		
	1.3 Drive		electric		electric		
Wheels/Chassis	1.4 Type of operation		seated		seated		
	1.5 Load capacity / rated load		Q	lbs	kg	3,000	1,380
Dimensions	1.6 Load center distance		c	in	mm	24	610
	1.8 Load distance, center of drive axle to fork		x	in	mm	13.6 <sup>1)</sup>	345 <sup>2)</sup>
Performance	Mast pushed forward		x <sub>1</sub>	in	mm	8.1	205
	1.9 Wheelbase		y	in	mm	55.5	1,410
Motors	2.1 Service weight including battery (see line 6.5)		lbs	kg	6,545	2,975	6,600
	2.3 Axle loading – unloaded, drive / load		lbs	kg	3,935 / 2,623	1,785 / 1,190	4,034 / 2,574
Other Details	2.4 Axle loading – fork advanced, loaded drive / load		lbs	kg	1,060 / 8,585	481 / 3,894	1,262 / 8,440
	2.5 Axle loading – fork retracted, loaded drive / load		lbs	kg	3,376 / 6,270	1,531 / 2,844	3,590 / 6,112
Wheels/Chassis	3.1 Tires		Vulkollan®		Vulkollan®		
	3.2 Tire size, drive		in	mm	13.5 x 4.5	343 x 114	13.5 x 4.5
Dimensions	3.3 Tire size, load		in	mm	11.2 x 3.9	285 x 100	11.2 x 3.9
	3.5 Wheels – number, drive / load (x = driven wheels)		1x / 2		1x / 2		
Performance	3.7 Track width, load side		b <sub>11</sub>	in	mm	38.8	986
	4.1 Mast – fork carriage tilt, forward / backward		degrees		1 / 3 <sup>2)</sup>		
Weights	4.2 Collapsed mast height		h <sub>1</sub>	in	mm	103	2,600
	4.3 Free-lift		h <sub>2</sub>	in	mm	61 <sup>7)</sup>	1,956
Other Details	4.4 Maximum fork height (MFH)		h <sub>3</sub>	in	mm	244	6,200
	4.5 Overall extended height (OAE)		h <sub>4</sub>	in	mm	309	6,844
Performance	4.7 Overhead load guard (cab) height		h <sub>6</sub>	in	mm	86.3	2,190
	4.8 Seat height / standing height		h <sub>7</sub>	in	mm	37.8	960
Weights	4.10 Height of wheel arms		h <sub>8</sub>	in	mm	12.5	315
	4.19 Overall length		l <sub>1</sub>	in	mm	95.2 <sup>1)</sup>	2,418 <sup>2)</sup>
Dimensions	4.20 Length to fork face, headlength		l <sub>2</sub>	in	mm	50.0 <sup>1)</sup>	1,268 <sup>2)</sup>
	4.21 Overall width		b <sub>1</sub> / b <sub>2</sub>	in	mm	44.1 / 44.1	1,120 / 1,120
Performance	4.22 Fork dimensions, thick / width		s / e / l	in	mm	1.6 / 4.7 / 45.3	40 / 120 / 1,150
	4.23 Fork carriage, ISO class / type A, B		2 / B		2 / B		
Weights	4.24 Fork carriage width		b <sub>3</sub>	in	mm	32.7	830
	4.25 Overall fork width		b <sub>5</sub>	in	mm	13.2 / 22.1	335 / 560
Dimensions	4.26 Distance between wheel arms / loading surfaces		b <sub>4</sub>	in	mm	30.7	782
	4.32 Ground clearance, center of wheelbase		m <sub>2</sub>	in	mm	3.14	80
Performance	4.33 Aisle width (for 48 x 40 pallets)		Ast	in	mm	111 <sup>3)</sup>	2,819 <sup>3)</sup>
	4.37 Length to tip of outrigger		l <sub>7</sub>	in	mm	70.6	1,792
Weights	5.1 Travel speed, loaded / unloaded		mph	kph	6.8-8.7 <sup>5)</sup>	11-14 <sup>3)</sup>	6.8-8.7 <sup>5)</sup>
	5.2 Lift speed, loaded / unloaded		ft / min	m / s	74.8-100.4 / 137.8 <sup>6)</sup>	0.38-0.51 / 0.070 <sup>4)</sup>	74.8-100.4 / 137.8 <sup>6)</sup>
Performance	5.3 Lowering speed, loaded / unloaded		ft / min	m / s	108.3	0.55	108.3
	5.4 Reach speed, loaded / unloaded		ft / min	m / s	39.4-47.2 <sup>6)</sup>	0.20-0.24 <sup>4)</sup>	39.4-47.2 <sup>6)</sup>
Weights	5.7 Gradeability, loaded / unloaded		%		9 / 13		
	5.8 Maximum gradeability, loaded / unloaded		%		10 / 15		
Performance	5.9 Acceleration time, loaded / unloaded		sec		5.1-4.6 / 4.8-4.3 <sup>3)</sup>		
	5.10 Service brake		electric		electric		
Motors	6.1 Drive motor (rating S <sub>2</sub> 60 minutes)		kW / hp		4.5-6.9 / 6.0-9.3 <sup>5)</sup>		
	6.2 Lift motor rating at S <sub>3</sub> 15%		kW / hp		10-14 / 13.4-18.8 <sup>6)</sup>		
Dimensions	6.4 Battery voltage		V	Ah	48	500	48
	6.5 Battery weight, minimum		lbs	kg	1,653	750	1,653
Performance	Battery dimensions, l / w / h		in	mm	40.7 / 13.9 / 31.0	1,035 / 353 / 787	48.1 / 11.1 / 31.0
	8.1 Type of drive control		impulse / AC		impulse / AC		
Other Details	8.2 Operating pressure for attachments		psi	bar	2,176	150	2,176
	8.3 Oil volume for attachments		gal/min	l/min	5.3	20	5.3
Weights	8.4 Sound level at driver's ear		dB (A)		68		

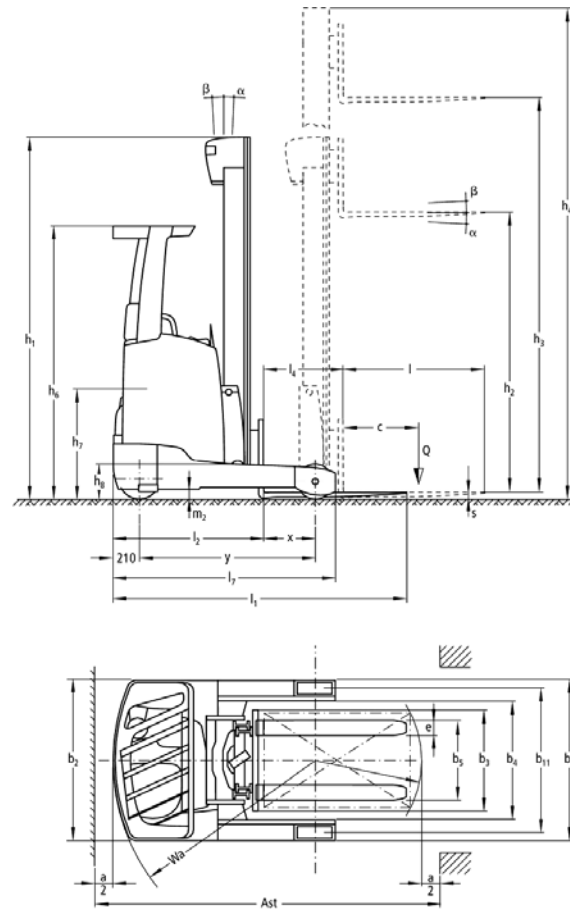
- 1) Other battery sizes change these values
- 2) Dependent on type of mast
- 3) Including 8 inch (200 mm) maneuvering space; second value is for floor storage
- 4) Lift height up to 220.5 inches
- 5) Second value for "Drive Plus" option
- 6) Second value for "Lift Plus" option
- 7) Includes load backrest of 39.5 inches / 1,000 mm

Characteristics	1.1 Manufacturer		Jungheinrich		Jungheinrich		
	1.2 Model		ETM216		ETV 216		
Weights	G = fork, E = integrated sideshift		GE		GE		
	1.3 Drive		electric		electric		
Wheels/Chassis	1.4 Type of operation		seated		seated		
	1.5 Load capacity / rated load		Q	lbs	kg	3,500	1,580
Dimensions	1.6 Load center distance		c	in	mm	24	610
	1.8 Load distance, center of drive axle to fork		x	in	mm	15.6 <sup>1)</sup>	395 <sup>2)</sup>
Performance	Mast pushed forward		x <sub>1</sub>	in	mm	8.1	205
	1.9 Wheelbase		y	in	mm	57.5	1,460
Motors	2.1 Service weight including battery (see line 6.5)		lbs	kg	6,842	3,110	6,899
	2.3 Axle loading – unloaded, drive / load		lbs	kg	4,045 / 2,811	1,835 / 1,275	4,149 / 2,765
Other Details	2.4 Axle loading – fork advanced, loaded drive / load		lbs	kg	1,142 / 9,242	518 / 4,192	1,149 / 9,293
	2.5 Axle loading – fork retracted, loaded drive / load		lbs	kg	3,636 / 6,749	1,649 / 3,061	3,656 / 6,786
Wheels/Chassis	3.1 Tires		Vulkollan®		Vulkollan®		
	3.2 Tire size, drive		in	mm	13.5 x 4.5	343 x 144	13.5 x 4.5
Dimensions	3.3 Tire size, load		in	mm	11.2 x 3.9	285 x 100	11.2 x 3.9
	3.5 Wheels – number, drive / load (x = driven wheels)		1x / 2		1x / 2		
Performance	3.7 Track width, load side		b <sub>11</sub>	in	mm	38.8	986
	4.1 Mast – fork carriage tilt, forward / backward		degrees		1 / 3 <sup>2)</sup>		
Weights	4.2 Collapsed mast height		h <sub>1</sub>	in	mm	103	2,600
	4.3 Free-lift		h <sub>2</sub>	in	mm	61 <sup>7)</sup>	1,956
Other Details	4.4 Maximum fork height (MFH)		h <sub>3</sub>	in	mm	244	6,200
	4.5 Overall extended height (OAE)		h <sub>4</sub>	in	mm	309	6,844
Performance	4.7 Overhead load guard (cab) height		h <sub>6</sub>	in	mm	86.3	2,190
	4.8 Seat height / standing height		h <sub>7</sub>	in	mm	37.8	960
Weights	4.10 Height of wheel arms		h <sub>8</sub>	in	mm	12.5	315
	4.19 Overall length		l <sub>1</sub>	in	mm	95.2 <sup>1)</sup>	2,418 <sup>2)</sup>
Dimensions	4.20 Length to fork face, headlength		l <sub>2</sub>	in	mm	50.0 <sup>1)</sup>	1,268 <sup>2)</sup>
	4.21 Overall width		b <sub>1</sub> / b <sub>2</sub>	in	mm	44.1 / 44.1	1,120 / 1,120
Performance	4.22 Fork dimensions, thick / width		s / e / l	in	mm	1.6 / 4.7 / 45.3	40 / 120 / 1,150
	4.23 Fork carriage, ISO class / type A, B		2 / B		2 / B		
Weights	4.24 Fork carriage width		b <sub>3</sub>	in	mm	32.7	830
	4.25 Overall fork width		b <sub>5</sub>	in	mm	13.2 / 22.1	335 / 560
Dimensions	4.26 Distance between wheel arms / loading surfaces		b <sub>4</sub>	in	mm	30.7	782
	4.32 Ground clearance, center of wheelbase		m <sub>2</sub>	in	mm	3.14	80
Performance	4.33 Aisle width (for 48 x 40 pallets)		Ast	in	mm	112 <sup>3)</sup>	2,845 <sup>3)</sup>
	4.37 Length to tip of outrigger		l <sub>7</sub>	in	mm	72.5	1,842
Weights	5.1 Travel speed, loaded / unloaded		mph	kph	6.8 - 8.7 <sup>5)</sup>	11 - 14 <sup>3)</sup>	6.8 - 8.7 <sup>5)</sup>
	5.2 Lift speed, loaded / unloaded		ft / min	m / s	68.9-94.5 / 137.8 <sup>6)</sup>	0.35-0.48 / 0.070 <sup>4)</sup>	68.9-94.5 / 137.8 <sup>6)</sup>
Performance	5.3 Lowering speed, loaded / unloaded		ft / min	m / s	108.3	0.55	108.3
	5.4 Reach speed, loaded / unloaded		ft / min	m / s	39.4-47.2 <sup>6)</sup>	0.20-0.24 <sup>4)</sup>	39.4-47.2 <sup>6)</sup>
Weights	5.7 Gradeability, loaded / unloaded		%		8 / 12		
	5.8 Maximum gradeability, loaded / unloaded		%		10 / 15		
Performance	5.9 Acceleration time, loaded / unloaded		sec		5.1-4.6 / 4.8-4.3 <sup>3)</sup>		
	5.10 Service brake		electric		electric		
Motors	6.1 Drive motor (rating S <sub>2</sub> 60 minutes)		kW / hp		4.5-6.9 / 6.0-9.3 <sup>5)</sup>		
	6.2 Lift motor rating at S <sub>3</sub> 15%		kW / hp		10-14 / 13.4-18.8 <sup>6)</sup>		
Dimensions	6.4 Battery voltage		V	Ah	48	500 <sup>1)</sup>	48
	6.5 Battery weight, minimum		lbs	kg	1,653	750	1,653
Performance	Battery dimensions, l / w / h		in	mm	40.7 / 13.9 / 31.0	1,035 / 353 / 787	48.1 / 11.1 / 31.0
	8.1 Type of drive control		impulse / AC		impulse / AC		
Other Details	8.2 Operating pressure for attachments		psi	bar	2,176	150	2,176
	8.3 Oil volume for attachments		gal/min	l/min	5.3	20	5.3
Weights	8.4 Sound level at driver's ear		dB (A)		68		

- 1) Other battery sizes change these values
- 2) Dependent on type of mast
- 3) Including 8 inch (200 mm) maneuvering space; second value is for floor storage
- 4) Lift height up to 220.5 inches
- 5) Second value for "Drive Plus" option
- 6) Second value for "Lift Plus" option
- 7) Includes load backrest of 39.5 inches / 1,000 mm

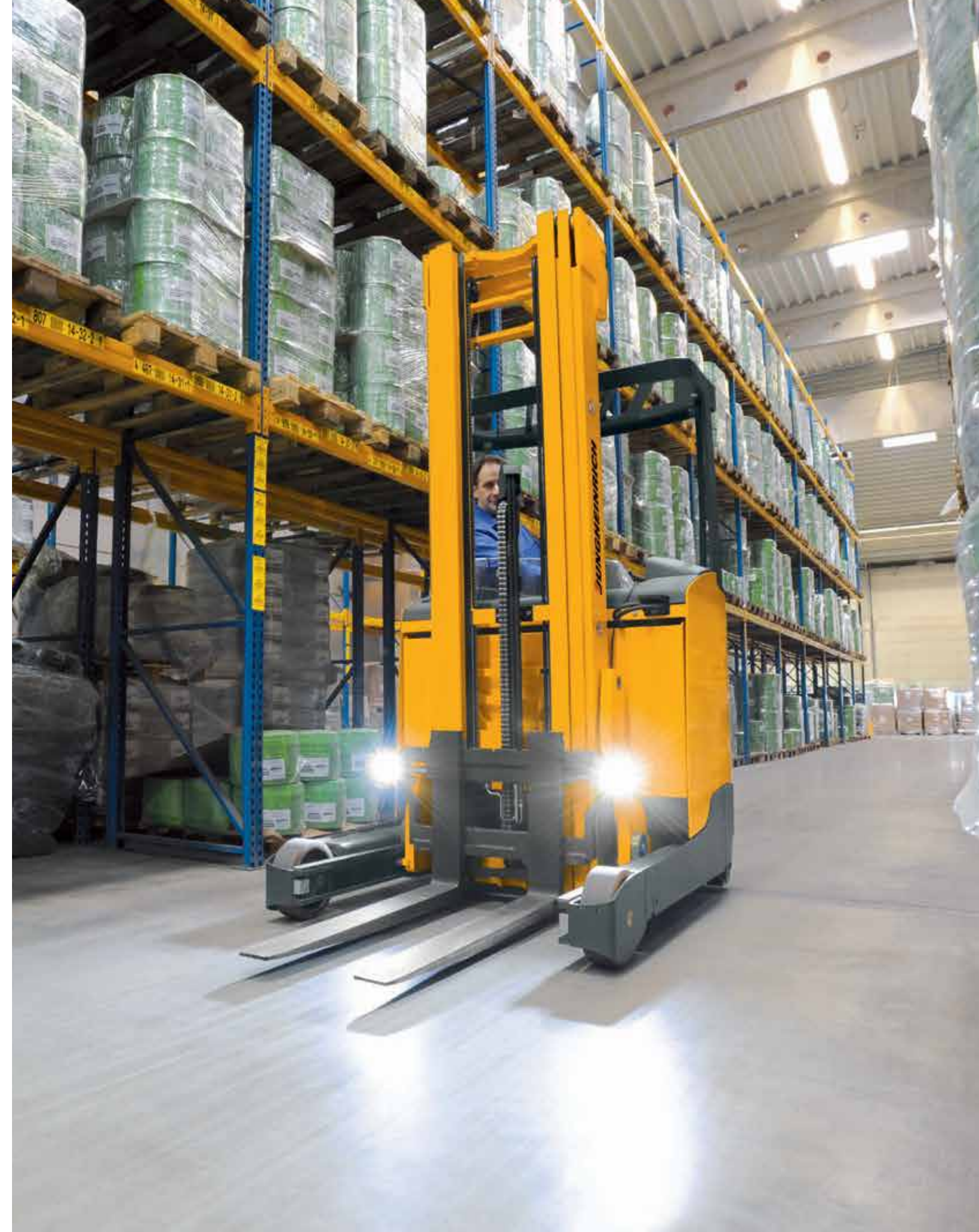
This specification sheet only provides technical values for the standard truck. Non-standard tires, different masts, additional equipment, etc., could produce other values. Rights reserved for technical changes and improvements.

# ETV/ETM 214/216



Mast Table ETV / ETM 214 / 216										
	Collapsed mast height h <sub>1</sub>		Lift height h <sub>5</sub>		Free lift h <sub>2</sub>		Extended mast height h <sub>4</sub>		Mast tilt forward / backward	Fork tilt forward / backward*
	in	mm	in	mm	in	mm	in	mm	α° / β°	α° / β°
Three-stage mast DZ (Full free-lift)	81	2,050	179	4,550	39.5	1,406	221	5,194	1 / 5	—
	87	2,200	196	5,000	45.5	1,556	238	5,644	1 / 5	2 / 5
	91	2,300	208	5,300	49	1,656	250	5,944	1 / 5	2 / 5
	95	2,400	220	5,600	53	1,756	262	6,244	1 / 3	2 / 5
	99	2,500	232	5,900	57	1,856	274	6,544	1 / 3	2 / 5
	103	2,600	244	6,200	61	1,956	286	6,844	1 / 3	2 / 5
	107	2,700	255	6,500	65	2,056	297	7,144	0.5 / 2	2 / 5
	111	2,800	267	6,800	69	2,156	309	7,444	0.5 / 2	2 / 5
	115	2,900	279	7,100	73	2,256	321	7,744	0.5 / 2	2 / 5
	119	3,000	291	7,400	77	2,356	333	8,044	0.5 / 2	2 / 5
	123	3,100	303	7,700	80.5	2,456	345	8,344	0.5 / 2	2 / 5
	126	3,200	314	8,000	84.5	2,556	357	8,644	0.5 / 2	2 / 5
	130	3,300	326	8,300	88.5	2,656	368	8,944	0.5 / 2	2 / 5
	132	3,340	331	8,420	90	2,696	373	9,064	0.5 / 2	2 / 5
	136	3,440	343	8,720	94	2,796	385	9,364	0.5 / 2	2 / 5
	140	3,540	355	9,020	98	2,896	397	9,664	0.5 / 2	2 / 5
	145	3,670	370	9,410	103	3,026	412	10,054	—	2 / 5
	152	3,840	390	9,920	110	3,196	432	10,564	—	2 / 5
	156	3,950	403	10,250	114	3,306	445	10,894	—	2 / 5
	160	4,040	414	10,520	117	3,396	456	11,164	—	2 / 5
162	4,100	421	10,700	120	3,456	463	11,344	—	2 / 5	

\*Includes standard load backrest with height 39.5 inches.



# The Jungheinrich Advantage

## Jungheinrich's AC technology

- Jungheinrich's 4<sup>th</sup> generation AC technology provides improved performance and energy efficiency.
- Sealed motors, controllers and connectors provide for better durability especially when working in dusty or damp applications.
- AC Electric Power Steering provides improved serviceability, performance and energy efficiencies.
- AC motors lower maintenance costs by removing wear items commonly found in DC motors, such as contactors, brushes and springs.

## Premium ergonomics

- Full suspension fabric seat with fore/aft, backrest and weight adjustments.
- Highly-adjustable operator compartment, which allows operators of various sizes to be comfortable and productive.
- Ergonomic and intuitive operator controls.



Highly ergonomic cab

- All drive and hydraulic functions are comfortably controlled by either the Multi-Pilot or Solo-Pilot control handles.
- Low effort AC electric power steering.
- LCD operator display.
- Provides immediate feedback to both the operator and technician.
- 360° steer direction indicator.
- Battery discharge indicator.
- Three performance modes which can be modified to suit any application.
- Optional readouts such as lift height indicator and load weight display.

## Robust and durable mast design

- Outstanding residual capacities.
- Excellent visibility both through and around the mast.
- Patented and proprietary mast reach cushioning allows for an improvement in operational productivities.
- Optional regenerative lowering can provide even more battery life, especially in those high lift applications.



MULTI-PILOT hydraulic control (optional)

## Performance-enhancing options to meet your application

- "Drive Plus" option increases drive speeds to 8.7 mph which can be especially beneficial for large warehouse applications.
- "Lift Plus" option increases lift speeds which can be especially beneficial for high lift applications.
- Anti-Slip Regulation (ASR) option for controlled acceleration on smooth or wet surfaces.
- A wide range of lift and lower limit options.

## Parts when you need them

Jungheinrich's Parts Fast or Parts Free Guarantee ensures next-business-day delivery by 5:00 PM of all Jungheinrich parts in the United States, or they're free, including freight. For customers in Canada and Mexico, the guarantee ensures shipping of parts within 24 hours from the time the order was placed by the dealer. See your local Jungheinrich dealer for program details.

\* Programs may be subject to change without notice and may vary by region. Please ask your local Jungheinrich dealer for complete terms and conditions.

